



**145 Distribution Drive
Pooler, GA 31322**



“Service is in our name.”



Table of Contents

- Who we are**
- Facility Information**
- Warehouse Services**
- Port Services**
- Transportation Services**
- Security, CTPAT Participation, FTZ status**
- WMS-Trakker Pro**
- Warehousing Memberships**



Will Coley
Owner/Operator

Born in and raised in southern Georgia, Will moved to Savannah in 1998 to start a career in Warehouse management and logistics. Will managed warehouses and handled sales for Lummus, Corp., a large OEM distributor in the Savannah area.

In 2004, Will started SWS, LLC and began exporting high volumes of textiles from the southeast to Asia. While excelling in this field, Will began handling import services for many of the local Freight Forwarders and Brokers. While under his management, SWS, LLC has seen a 200% growth in business over the last three years. In order to fulfill the growing number of export and import customers that required a Warehouse at the Port of Savannah, Will has added several key personnel in order to facilitate the level of services that his customers demand.



Bio of SWS's Staff

<u>Name</u>	<u>Position</u>	<u>Experience</u>
Ben Clary	Dispatch/Container Tracking	3 years as a trucking/intermodal dispatcher for Road Link.
Kelli Golden	Warehouse Supervisor	15 years as a Operations Supervisor for Dollar Tree and APS/Schneider.
Miriam Gruber	CFO/Controller	26 years as a warehouse manager and inventory control VP for ASI and F&W Ag services. Miriam controlled all invoicing for five separate warehouses.



Bio of SWS's Staff (cont.)

William Maguire

Warehouse Operations

19 years as a warehouse supervisor for International Paper and Union Camp. Has excellent experience in loading/unloading odd sized freight.

Jed Young

Sales Manager

8 years experience in food distribution and logistics at the retail level. Has worked as a customer service representative in a variety of fields over the last five years.

Jeffery Desimone

Warehouse Supervisor

8 years experience in 3PL and Warehousing. Has over 10 years experience as team leader of warehouse production facility at Chental.



Savannah Transportation Services

Connie Kinney

Broker

**15 years experience
In Freight Brokering
and Transportation
Dispatch.**

Malisa Wildes

Dispatch

**10 years experience
in Load Scheduling
and Lane Tracking.**



Facility Information

Our main facility is located 3.5 miles from Container gate 4 of the Garden City Terminal at the port of Savannah. We are only three miles from I-95, right off of exit 102. We are two miles from I-16, off of exit 160.

The main facilities 200,000 sq. feet were constructed in 2008. Built with port and warehouse services in mind, we have twenty six dock doors that facilitate mechanical load levelers with axel locks, 9' openings, and continuous awnings. This facility houses our company offices and customer services staff.







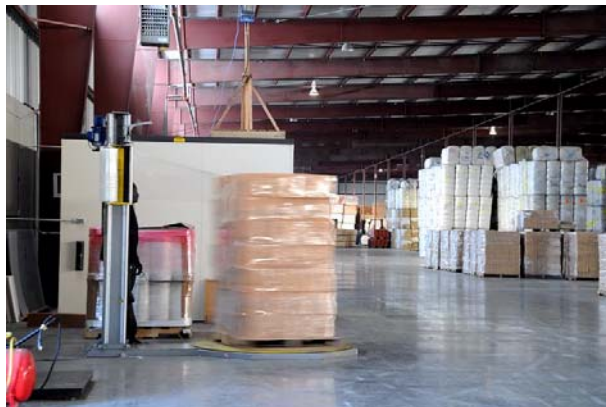




Warehousing Services

At Savannah Warehouse Services we offer general storage and distribution services to the greater Savannah area. However, we continue to meet and exceed our customers needs by expanding our services including the following:

- Container Loading/Un-loading**
- Kitting/Pick-Pack/Quality Control Inspections**
- Crating/Boxing Services**
- Bracing/Dunnage/Container Lining**
- Re-packaging/Palletizing**
- Shrink/Stretch Wrap Services**
- Consolidation/Deconsolidation**





Port Services

SWS can assist you with a wide array of port related services, including the following:

Foreign Trade Zone Certified

Customs Bond

Container Drayage

HAZ MAT

Fumigation

Crating and Packing

Cross-docking





Transportation Services



Savannah Warehouse Services, LLC has its own company trucks that are driven by SWS employees. SWS also has 15 owner operators with extensive port experience. All together, SWS has 20 dedicated trucks to service its customers locally and in the tri-state area. We also have a broker service and LTL partners which allow us to provide nationwide transportation services via our sister company, Savannah Transportation Services, LLC.



Safety, Security, and C-TPAT Participation



Here at SWS, we take the safety of our employees, vendors, and customers very seriously. With our proactive approach to safety, we focus our efforts on preventing accidents. This is done through establishing programs that include the input of ALL of our employees and continuous improvements to all of our operations.

Our facility and property has exterior lighting and security. All access to our facility is limited to the management and supervisors of the company. Each supervisor has his/her own security code which provides employee accountability at every level. Our monitored security and fire system includes interior beams, motion detectors, and entry points that are monitored at a central station. We also have CCTV camera system with data recorders in the event of any theft, as well as to monitor our employees daily activity.

Even though US Customs and Border Protection does not have a specific category for warehouses, we have taken steps to follow the “best practices” approach to C-TPAT. We have adopted the same principles that apply to importers/exporters and implemented them into our program.

SWS, LLC is an active FTZ with a high security custom’s bonded cage inside of the warehouse. The container storage yard and dock area are enclosed with a Customs approved fence, with razor wire and cameras with motion sensors covering the entire yard and dock area.



WMS



3PL Public Warehousing Software Features

For warehouse owners that charge customers for inventory storage space and the services they provide, Traker may handle your entire inventory, billing and shipping needs. Customize all your charges to suit each customer or product and then send those invoices seamlessly to your accounting package in Quick Books or Peachtree.

[Web Access Module](#)

- Extend the ease of Inventory Traker to your customers with our Web Access Module.

[Inbound/Receiving \(Screen Shots\)](#)

- Inventory Traker™ includes complete inbound/receiving capabilities.
- Easy to use lookup screens for customers and their products. No need to exit the inbound screen to enter new customers or their products.

- Lot numbers may be assigned manually or automatically.
- Lot tracking may also be disengaged.
- Print Inbound Receipts and Receiving Labels using our forms or yours.
- Backorder capability is also an option.

Outbound/Shipping (Screen Shots)

- Inventory Traker™ includes complete outbound/shipping capabilities.
- Shipments may be withdrawn automatically or manually using either the FIFO or LIFO method.
- Easy to use lookup screen for customers and their products. No need to exit the outbound screen to enter new customers.
- Shipments may be posted for daily shipment or reserved for later shipments.
- Print Picking Slips, Shipping Labels and Bills of Lading using our preprinted forms or yours, we can also print to plain paper.

Inventory Control (Screen Shots)

- Inventory records are well organized and are updated automatically.
- Never worry about shipping Expired or On Hold products again! Traker notifies you when product has reached its' expiration date.
- Inventory Traker™ allows for multiple warehouse tracking.
- In the event of a Product Recall, Inventory Traker™ may track product by item#, lot#, production code, date or shift, the carrier who transported the product and the consignee who received the product.

Warehouse Fulfillment (Screen Shots)

- Traker Systems Fulfillment Module provides the power and flexibility that you need to meet your customer's requirements in a true pick and pack operation. With our BOM you are able to create multiple levels of subassembly, picking at the item and lot level to create your assemblies.

In addition, with our invoicing module you are able to automatically create charges for these services however complex your billing method.

Warehouse Storage Invoicing (Screen Shots)

- Inventory Traker™ provides complete invoicing, billing and charging capabilities.
- Complicated charging schemes are easy to manage with Inventory Traker™:

Charge for:

Short Term Storage

Long Term Recurring Storage

Handling Charges

Charge per:

Container

Case

Pallet

Shipper

Cube

Sq Ft

Create Miscellaneous Charges for:

Bills of Lading

Picking Fees

Labeling Costs

Transportation

Accessorial Fees

- They can be applied with a simple right click of the mouse on your Inbound or outbound shipping screen.
- Invoice Wizards take you through the step-by-step process of billing your customer for warehousing.
- Print invoices using your forms or purchase preprinted invoices from us at a reasonable cost.
- Warehousing Invoices may be exported easily to your existing accounting program and Traker Systems has seamless interfaces created for both Quick Books and Peachtree.

Bar Coding

- Inventory Traker™ may provide the interface necessary to handle your bar coding needs. We would be happy to discuss your bar coding software and hardware requirements.

Reporting and Analysis (Forms and Pricing)

Inventory Traker™ provides a rich set of reports and forms for any situation. We have developed a comprehensive set of analysis tools to help you make intelligent decisions about your inventory. Analysis includes:

- Inventory On-Hand
- Product Turnover
- Total Revenue from Invoicing
- Total Cost of Warehousing
- Product Expiration / OnHold Analysis



Warehousing Memberships



Regional Memberships

Propeller Club of Savannah

**The Independent Freight Forwarders and Brokers
Association**

The Savannah Maritime Association

Who's Who of the Georgia Port Authority

The Savannah Traffic Club

The Atlanta Maritime Association

American Chain of Warehouses, Inc.

**Leonard's Guide Warehouse and Distribution
Directory**